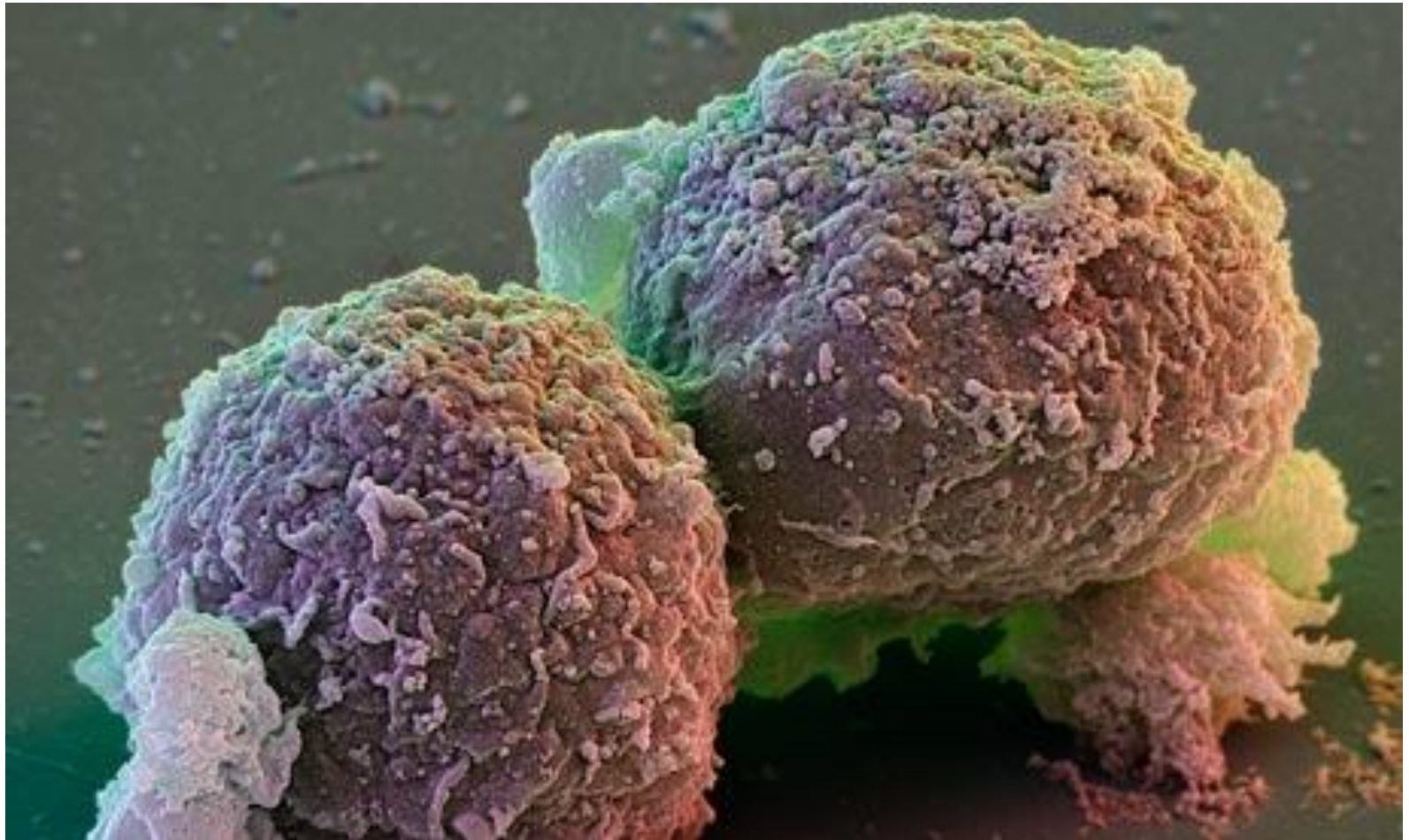


Cellule staminali embrionali:

considerazioni
bioetiche sulla libertà di ricerca







Pluripotent Stem Cells (PSC)

Mesoderm
(Middle Layer)

Endoderm
(Internal Layer)

Ectoderm
(External Layer)



Cardiac Muscle

Skeletal Muscle Cells

Tubule Cell of the Kidney

Red Blood Cells

Smooth Muscle (In Gut)

Lung Cell (Alveolar Cell)

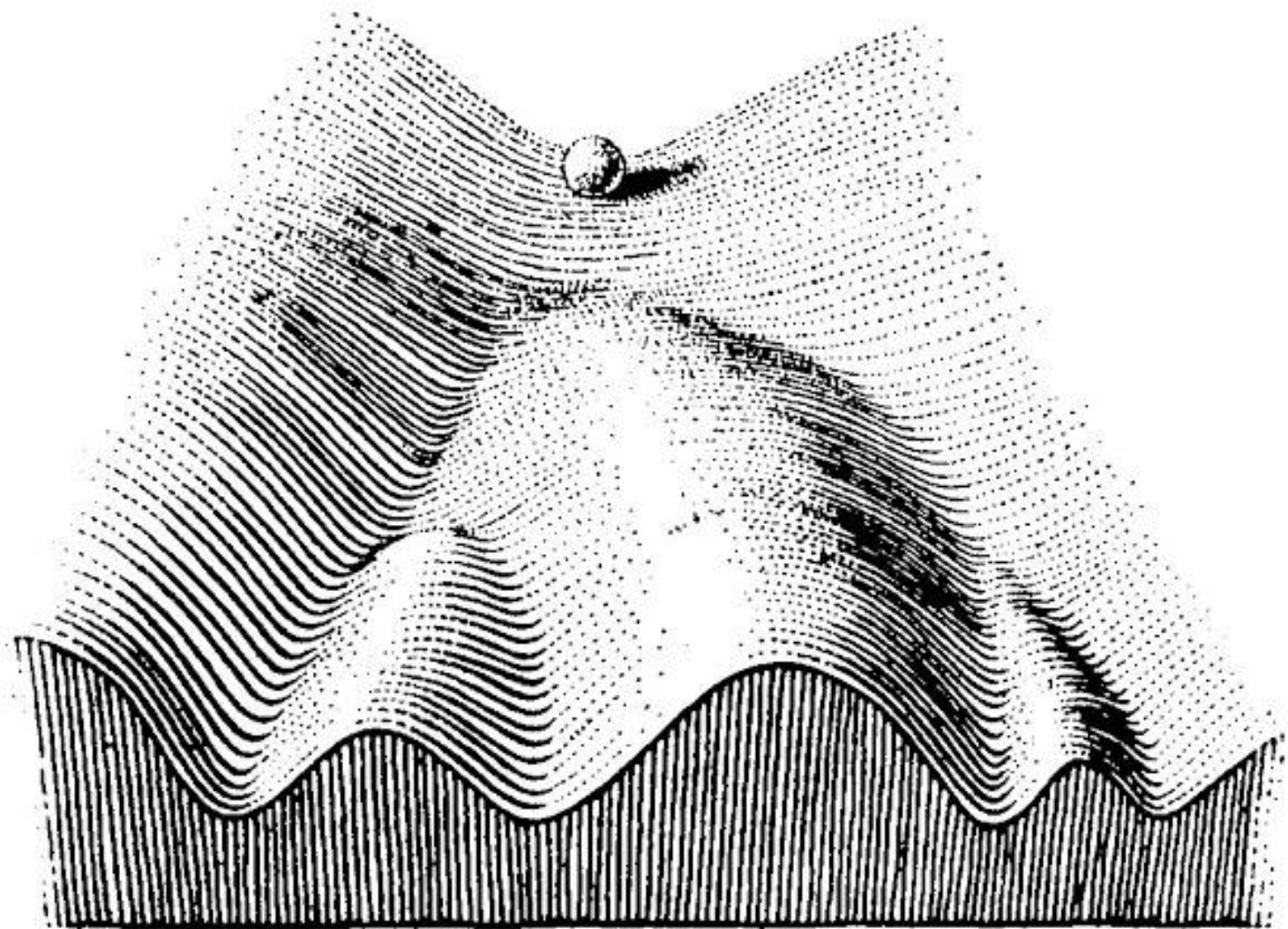
Thyroid Cell

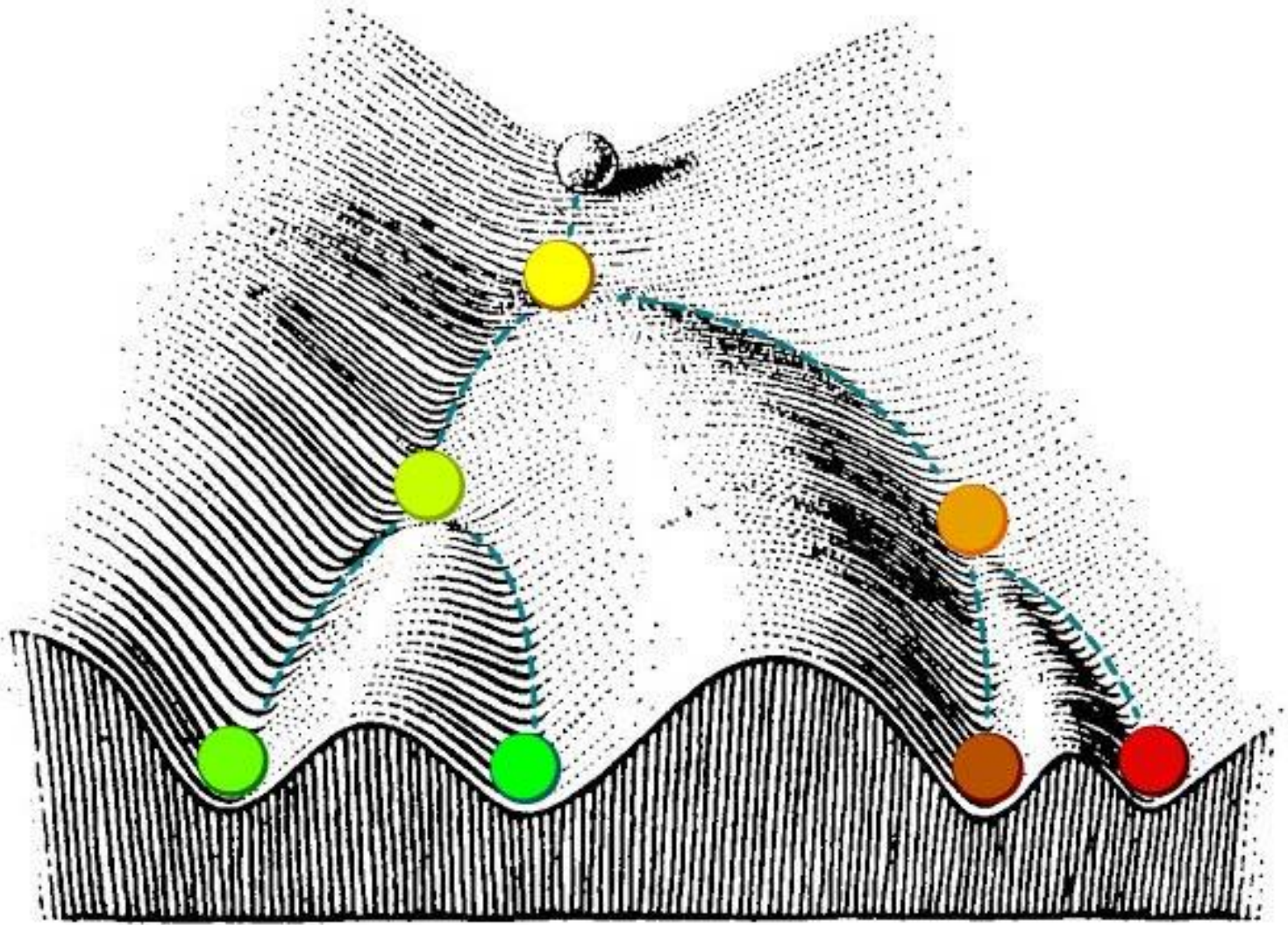
Pancreatic Cell

Skin Cells of Epidermis

Neuron Cell

Pigment Cell



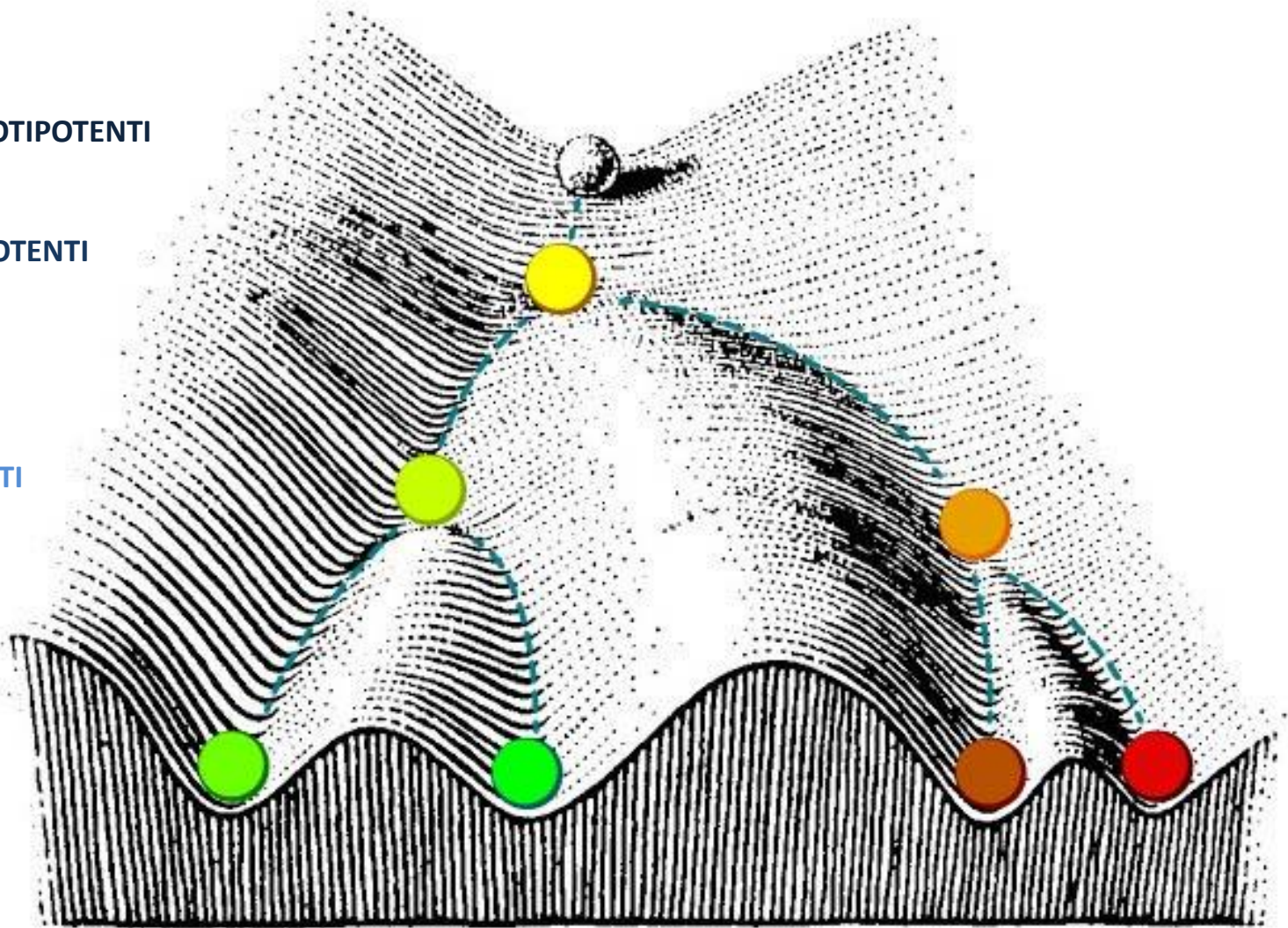


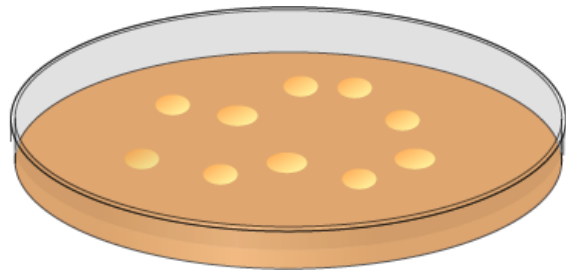
TOTIPOTENTI

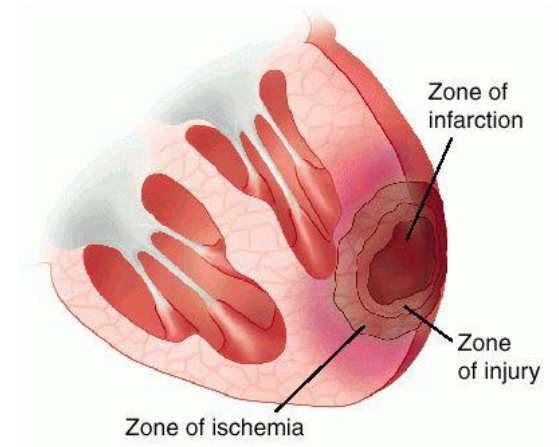
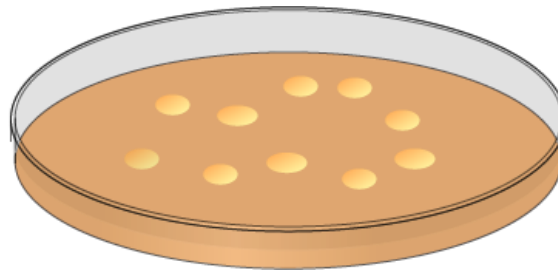
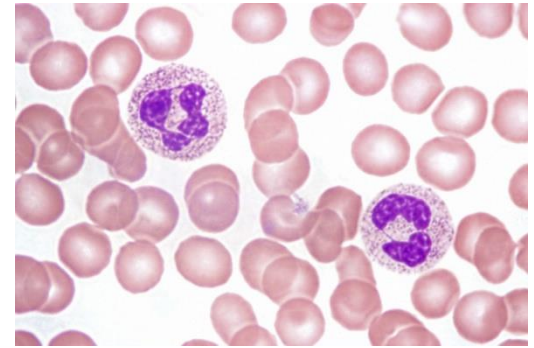
PLURIPOTENTI

MULTIPOTENTI

UNIPOTENTI



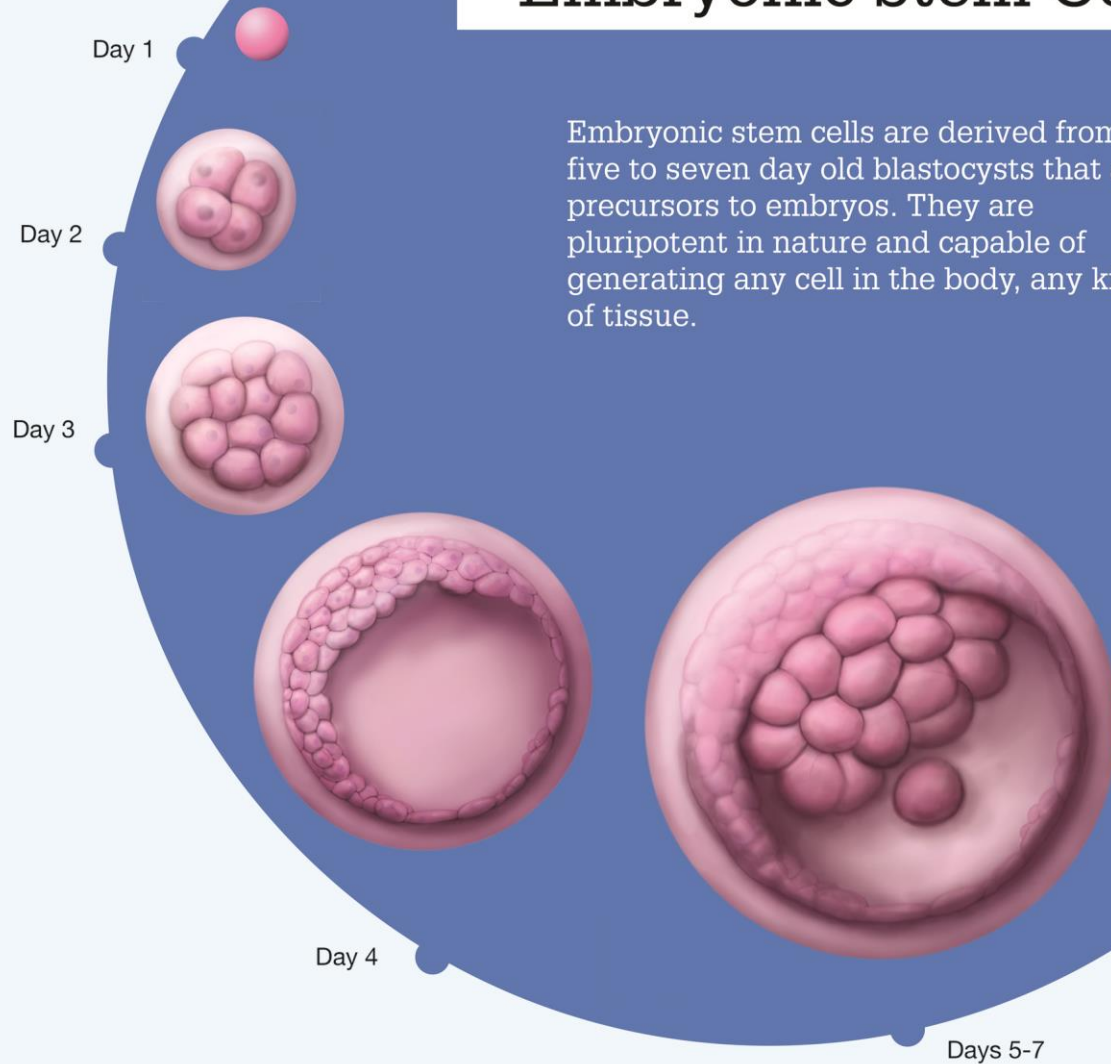


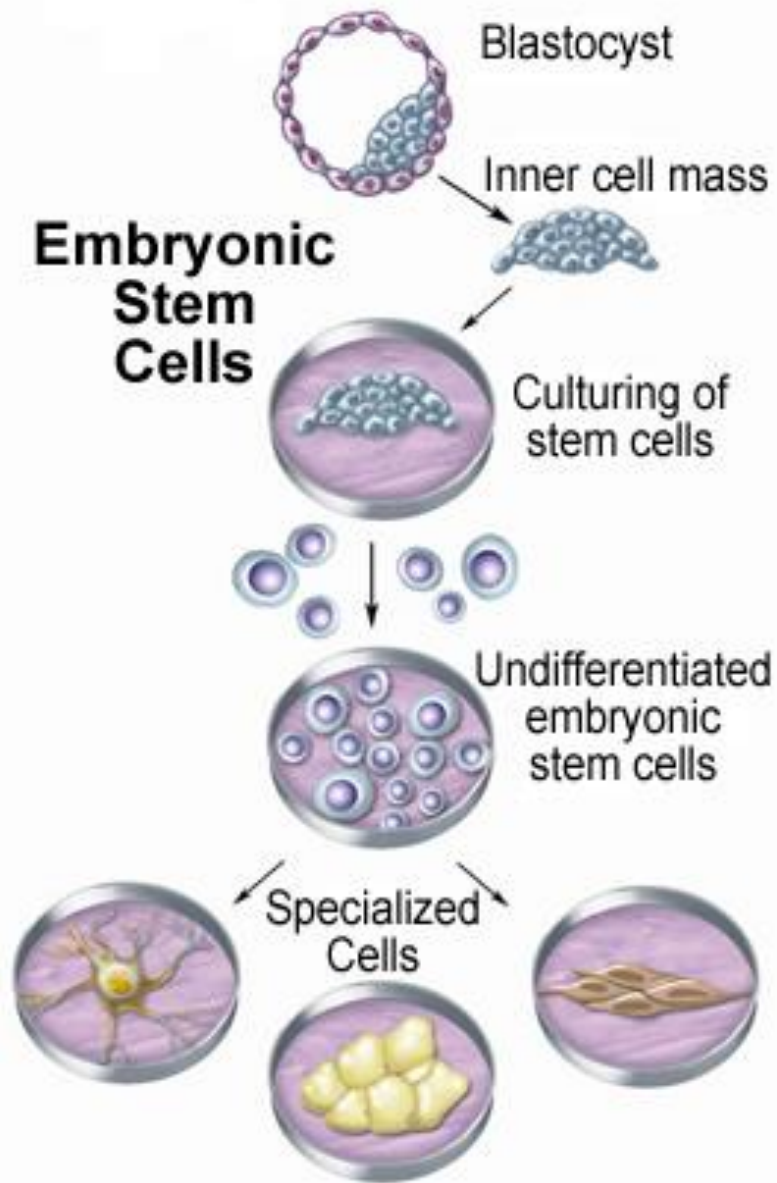


ESC

Embryonic Stem Cells

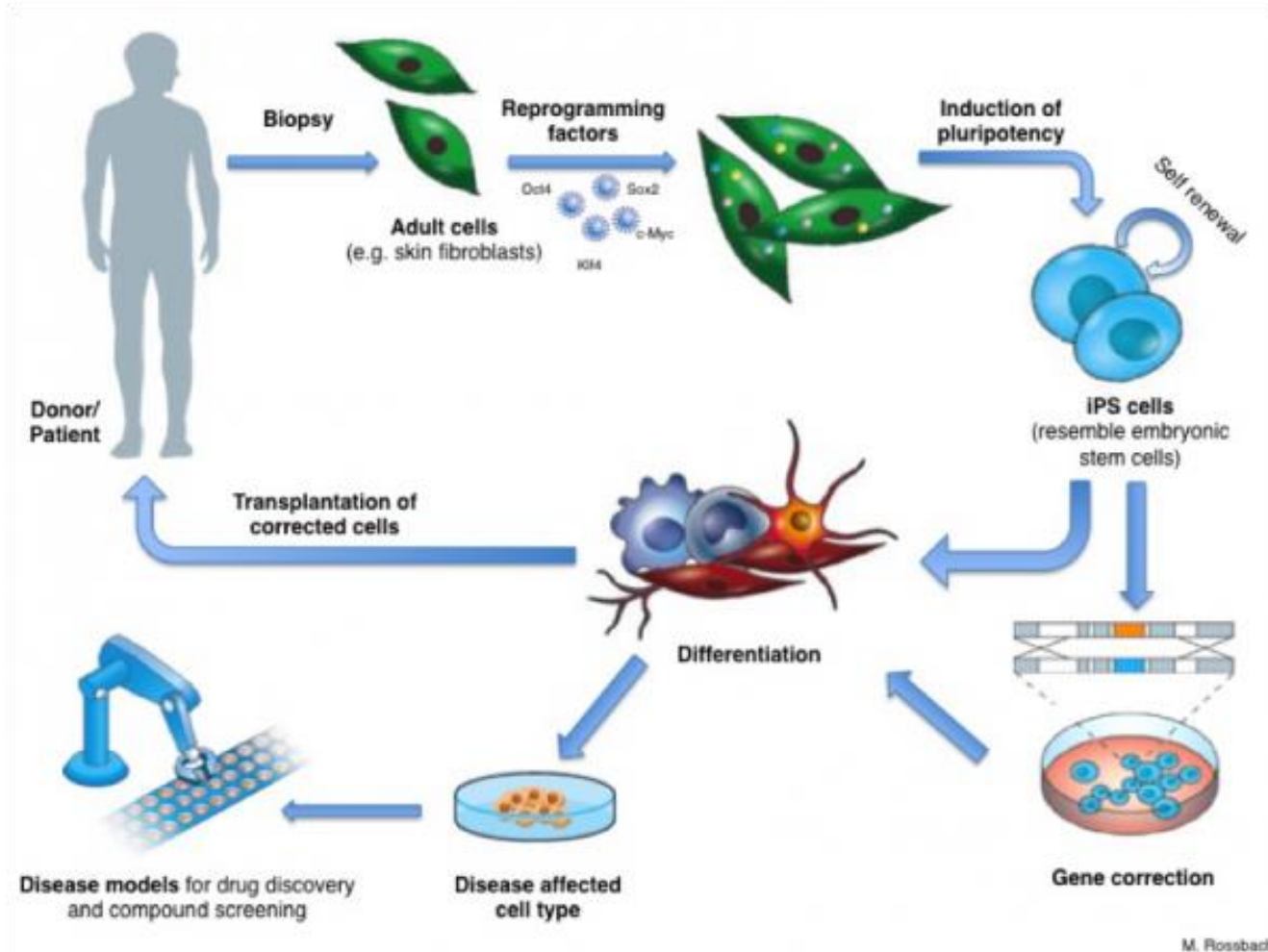
Embryonic stem cells are derived from five to seven day old blastocysts that are precursors to embryos. They are pluripotent in nature and capable of generating any cell in the body, any kind of tissue.

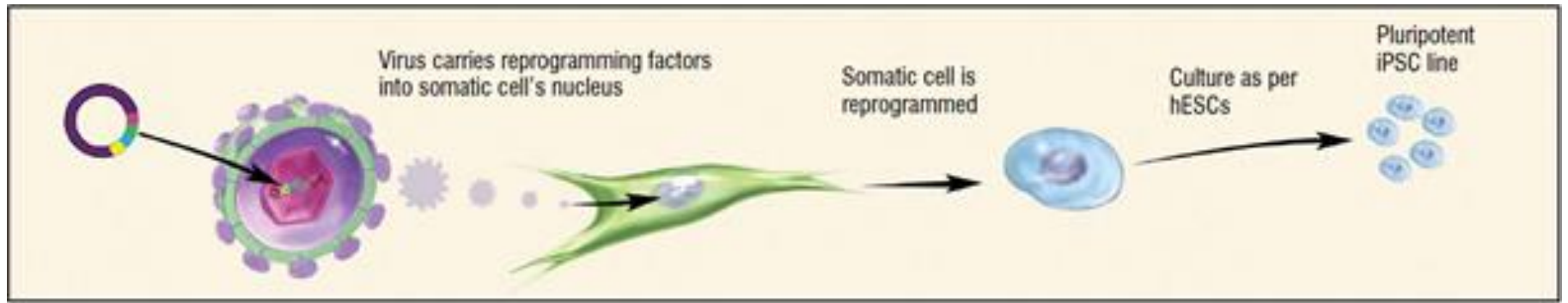




iPSC

Induced Pluripotent Stem Cells





...la riflessione bioetica



Grazie per l'attenzione!

Il materiale presentato e approfondimenti relativi sono disponibili al sito

www.giovanispitale.net/cellule-staminali

Per domande, curiosità e chiarimenti potete scriverci su Facebook!

Angela Bonato

Giovanni Spitale